



# ARE YOU A REFUGEE HEALTHCARE PROFESSIONAL?



## the LEARNING HUB

University Hospitals Birmingham **NHS**  
NHS Foundation Trust

Heart of Birmingham **NHS**  
Teaching Primary Care Trust



The regional leader for developing economic prosperity



Keen to explore new training and employment opportunities in the healthcare sector?

Activate acknowledges the financial support of the European Regional Development Fund and Advantage West Midlands.

# activate

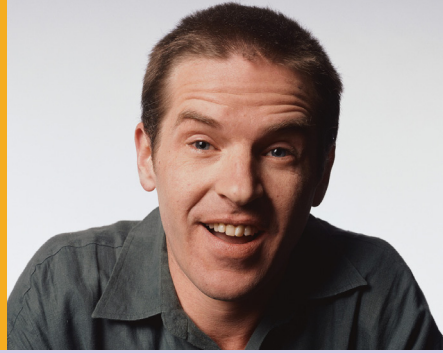
The Learning Hub, 180 Metchley Lane, Edgbaston, Birmingham B15 2TA

0121 697 8200

# activate

“Building Bridges”

0121 697 8200



## Week one

- Individual training needs analysis.
- Job preparation training including support with application forms, interview techniques, CVs and letter writing.
- Support with regular job searching.
- Talks from guest speakers.
- Confidential information, advice and guidance.
- Support with college /F.E/H.E applications and interviews
- ESOL

## Week two

- Practical work taster placement within designated occupational area.
- Support and mentoring throughout the work placement.

## Week Three to six

- Ongoing support to identify vacancies and training opportunities
- Regular Job Shop sessions held at The Learning Hub
- Assistance with job search at the weekly jobshop

## How many hours is the course?

Week one: 5 days 9.30 - 3.30

Week two: 18 hours to be arranged

## Where will the course take place?

Week 1 The Learning Hub,  
180 Metchley Lane, Edgbaston

Week 2 Placements with Heart of  
Birmingham Teaching PCT

Week 3-6 The learning hub

## How much does it cost?

It's free and a Daysaver ticket will be issued for each day of attendance.

## What is Activate?

### *“Building Health”*

A programme which supports you in updating your skills, to help you to look at alternative careers in the NHS and other organisations.

The NHS employs over 126,000 staff in the West Midlands. As well as professional occupations which include Doctors, Nurses, Scientists and Managers, the NHS and the wider Health and Social Care Workforce also employ non-professional roles e.g. Health Care Assistants / Support Workers, Administration and Clerical, Porters, Domestic, Theatre Orderlies and Catering

# activate

Assisting Communities to Identify Vocational Areas of Training and Employment